

Installation Instructions

The number one veranda specialist in the Netherlands

100% Quality Guarantee

Stay dry all year with an aluminium patio roof

Everybody likes to sit outside on the patio, but weather can be unreliable. Even a sunny summer's day can quickly turn into a heavy downpour, resulting in cancelled barbecues and drenched patio furniture. The solution, as simple as it is practical, is a patio roof. The coated aluminium structure and polycarbonate plates will keep you dry whatever the weather. Furthermore, the polycarbonate plates take the edge off the sun whilst still letting through plenty of light.

The following symbols are used in these assembly instructions:



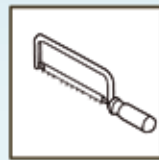
Use a drill



Rotate 180°



Use a hammer



Use a hacksaw



Some force required



Use a caulking gun



Use a Stanley knife



Two-person job



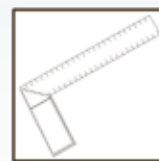
Use a hole saw



Check for level



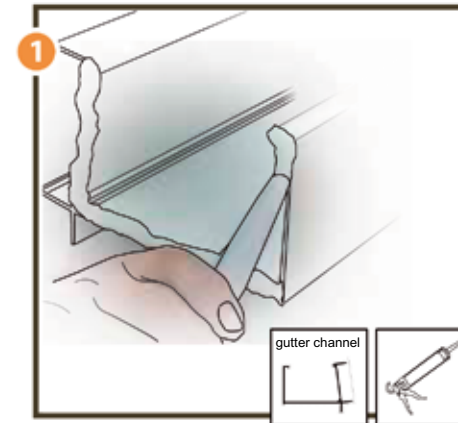
Check carefully



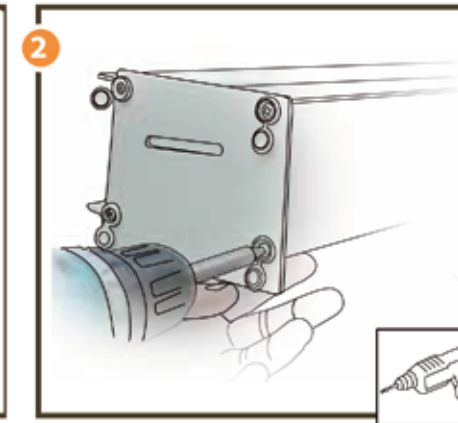
Use a carpenter's square

Preparation of components

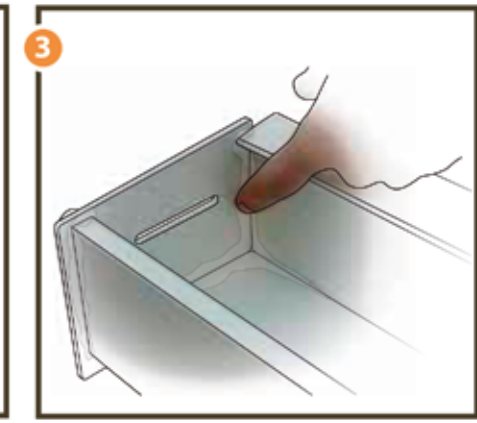
Assembling the gutter with a normal gutter cap



Apply silicon caulk to the ends of the gutter channel.

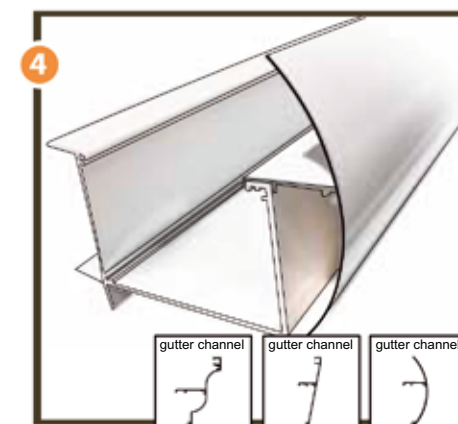


Screw the end plates onto the gutter channel using four self-tapping screws.

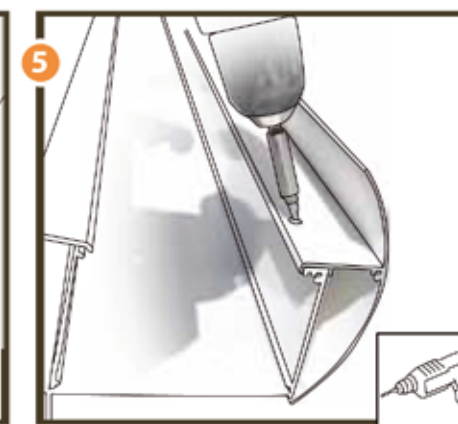


Make sure the silicon caulk is smooth and watertight on the inside.

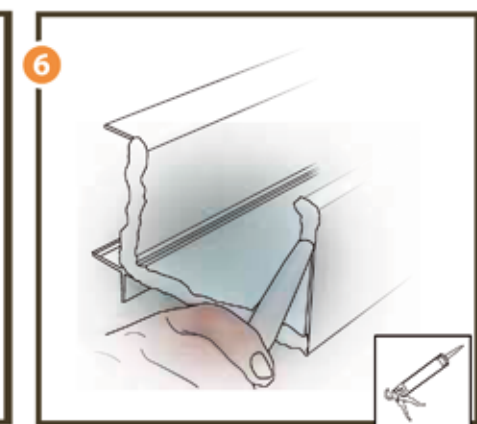
Assembling the gutter with optional decorative gutter cap



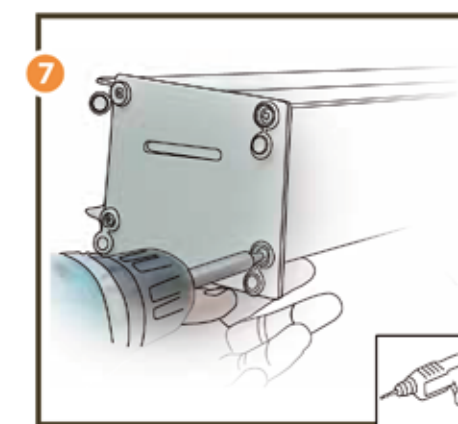
Place the decorative trim against the gutter channel.



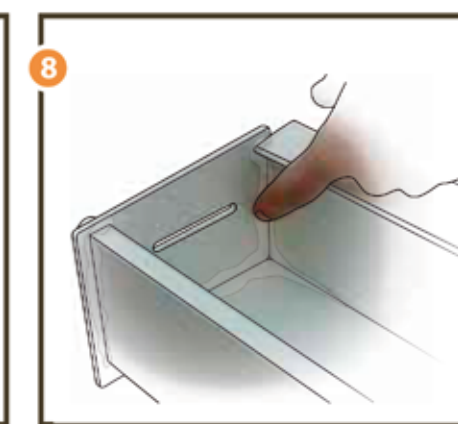
Screw the gutter cap onto the gutter channel using one self-tapping screw every 750 mm.



Apply silicon caulk to the ends of the gutter channel.



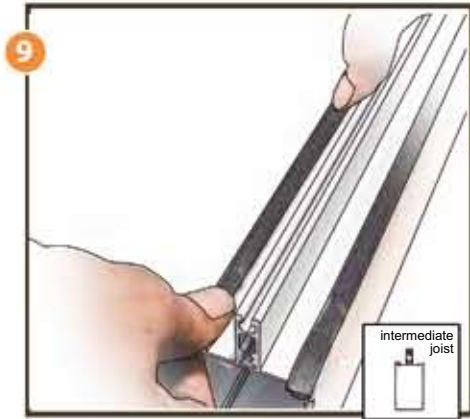
Screw the end plates onto the gutter channel using four self-tapping screws with screw caps. Click the screw caps into place on the self-tapping screws.



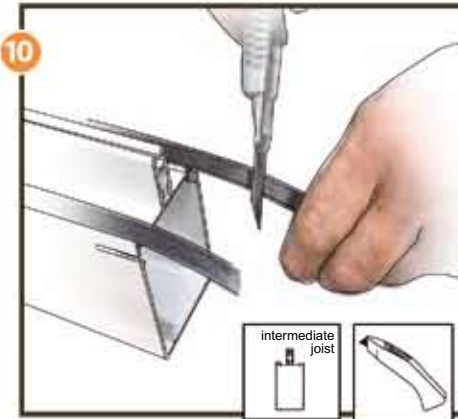
Make sure the silicon caulk is smooth and watertight on the inside.



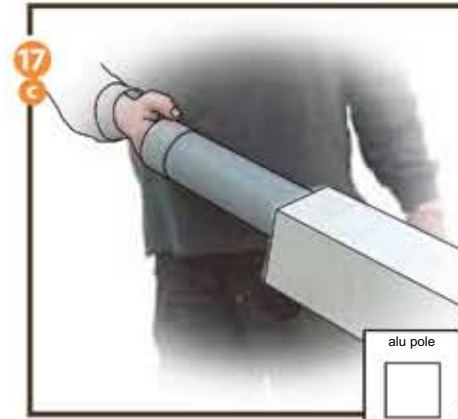
Preparing the intermediate joists



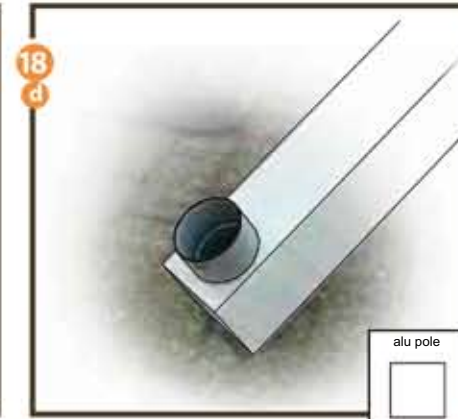
Insert the rubber strips into the slots along the entire length of the intermediate joists. The rubber strip cushions the polycarbonate plates.



At the gutter end, cut off the rubber strips flush with the end of the joist. At the wall end, allow the rubber strips to extend 30 mm past the end.



Slide a PVC pipe inside the alu pole.



Glue the PVC elbow to the PVC pipe.



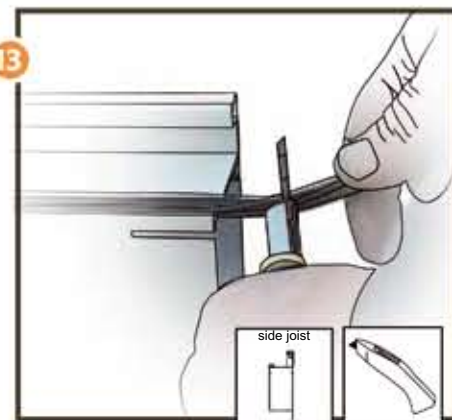
Preparing the side joists



Insert the rubber strip into the slot along the entire length of the side joist. The rubber strip cushions the polycarbonate plates.

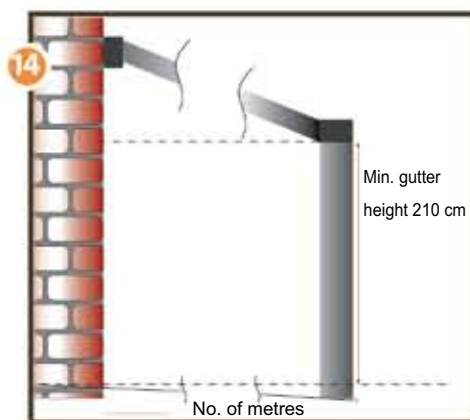


Perform the previous step for both the left and right side joist.

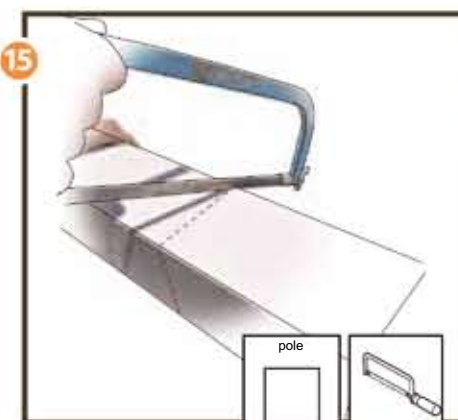


At the gutter end, cut off the rubber strip flush with the end of the joist. At the wall end, allow the rubber strip to extend 30 mm past the end (cut at an angle).

Cutting the poles to length



Calculate the length of the aluminium pole. Length alu pole = minimum height + extra centimetres for patio floor slope or anchoring in the ground. Mark the pole on all sides at the calculated length.

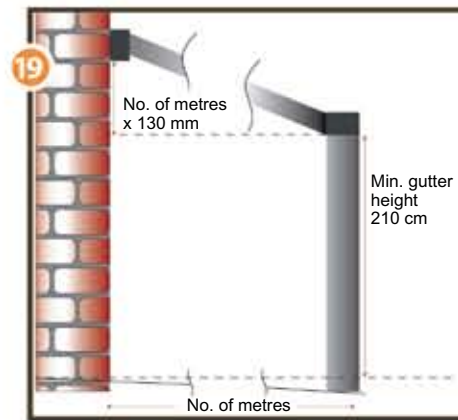


Saw the pole to length. Repeat step 14 for the second alu pole. Saw the second alu pole to the correct length.



If the water discharge will not be connected to the sewer
a. Determine which alu pole will contain the water discharge.
b. Drill the opening for the water discharge with the 80 mm hole saw.

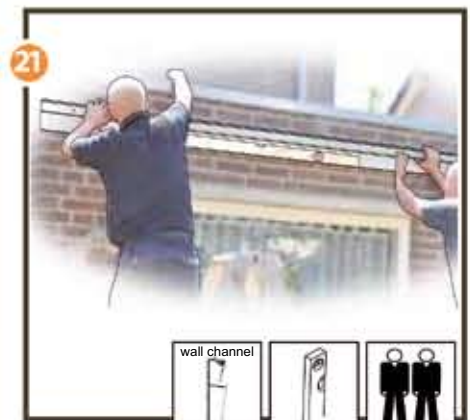
Installation of wall channel



Calculate the mounting height for the wall channel. Height of wall channel (bottom edge) = minimum height of gutter + (depth of patio roof in metres x 130 mm). Example: Minimum gutter height 2100 mm. Patio depth: 3 metres x 130 mm = 390 mm. Underside of wall channel = 2490 mm.



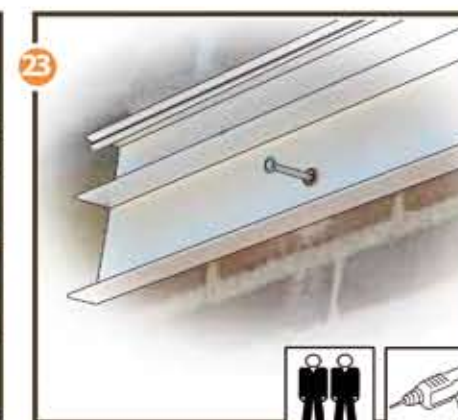
Pre-drill the holes for the nail plugs in the wall channel with a metal drill bit. The mounting holes in the wall channel should be drilled one every 750 mm.



Hold the wall channel against the wall so the mounting holes can be drilled into the brick (2 people). Hold the wall channel level. Mark the position of the wall channel on the wall.



Pre-drill the holes for the nail plugs in the wall channel.



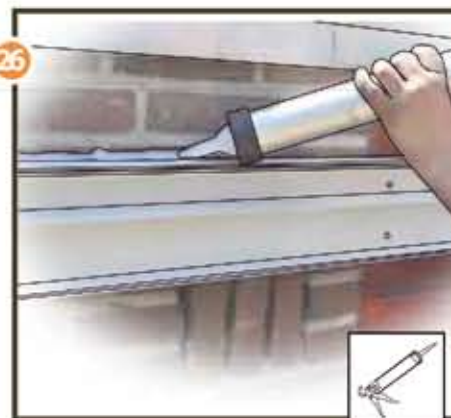
Hold the wall channel against the wall (2 people). Check whether the wall channel is level. Drill the mounting holes in the wall, one every 750 mm.



Secure the wall channel to the wall with the nail plugs (2 people). Pound the nail plugs into the mounting holes with a hammer. Screw the nail plugs the last bit to tighten them securely.



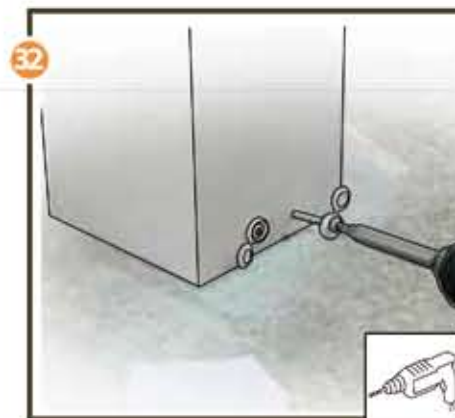
Degrease the wall profile along the top, next to the wall.



Caulk the seam between the wall and the wall channel with silicon caulk.



Strike off the silicon caulk for a smooth and watertight seal.

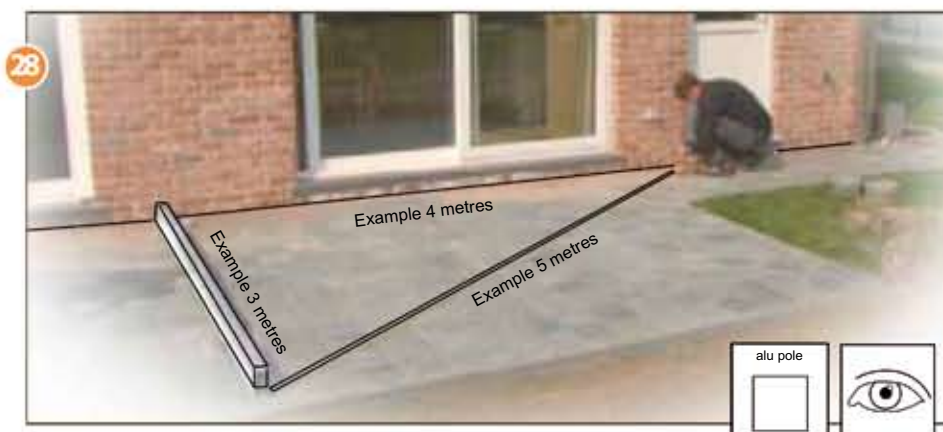


Secure the alu pole to the mounting plate using self-tapping screws with screw caps. Click the screw caps into place on the self-tapping screws.



Installation of poles

Installing a pole on the patio



Measure the distance from the wall to the pole.

Attention! Measure the distance at a right angle. Use Pythagoras' theorem:

- measure 4 metres along the wall
- measure 3 metres away from the wall
- make sure the diagonal side is 5 metres, then you know you have a right angle

Drilling in patio tiles

Concrete & soft stones:

- Use a hammer drill, at full speed.

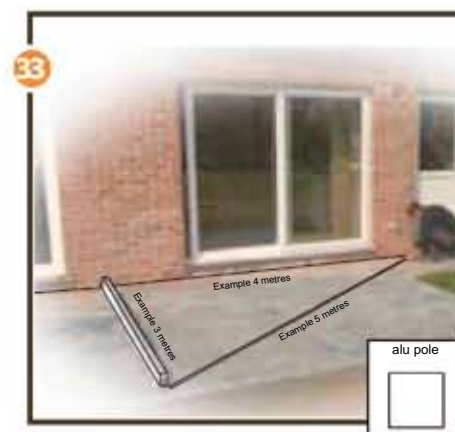
Hard stone:

- Do not use the hammer setting, and drill a bit more slowly.

Ceramic tiles:

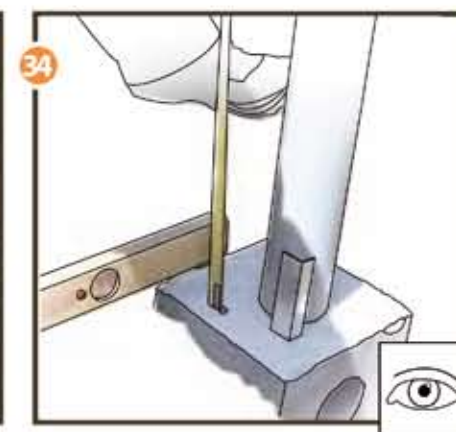
- Drill through the tiles without the hammer setting.
- Once you are through the glaze, you can use the hammer setting.

Placing a pole with water discharge in the ground (Optional)

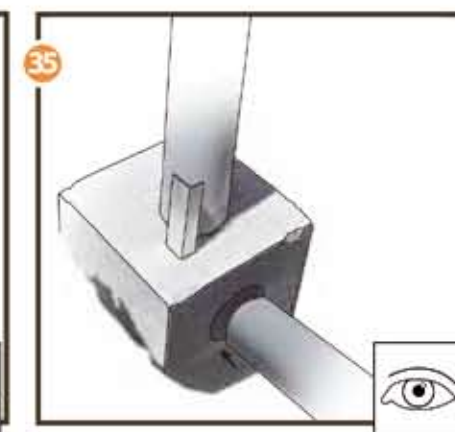


Measure the distance from the alu pole to the wall.

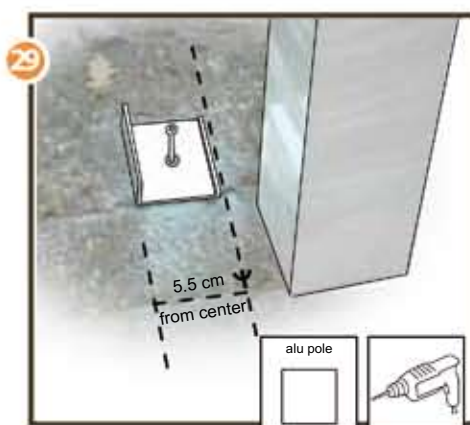
Attention! Measure the distance at a right angle (see fig. 28).



Place the cement block in the ground. Make sure the upper surface of the cement block is at least 5 cm below the surface of the ground.



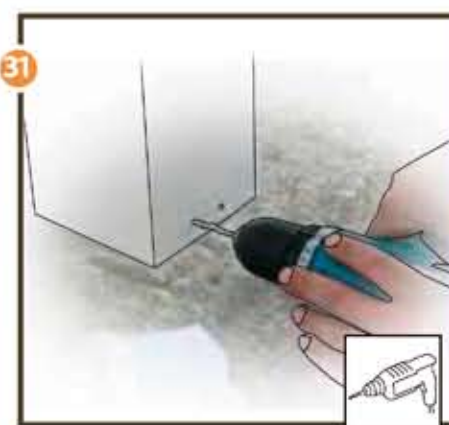
Connect the water discharge from the cement block to the sewer.



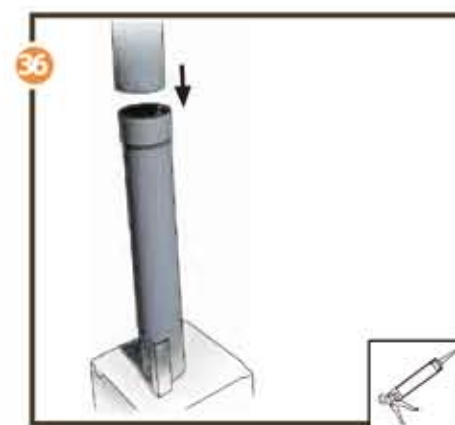
Mark the position of the mounting plates for the poles. The midpoint of the alu pole should be at the depth of your roof. For example: centreline at 300 cm, inner edge of mounting plate = 294.5 cm from the wall. Pre-drill the holes. Screw the mounting plates to the patio floor.



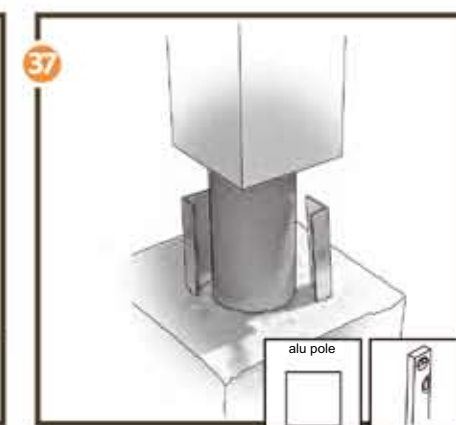
Slide the alu pole over the mounting plate. Make sure the pole is plumb.



Pre-drill two mounting holes in each alu pole for the mounting plate.



Apply adhesive to a PVC pipe and slide it into the vertical pipe on the concrete block.

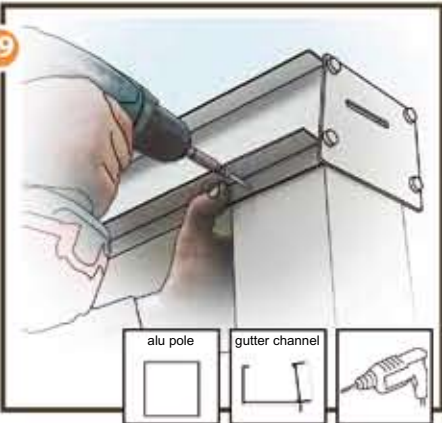


Slide the alu pole over the PVC pipe and over the mounting brackets. Make sure the alu pole is plumb.



Pre-drill two mounting holes in the pole for each mounting bracket. Screw the pole to the mounting brackets using self-tapping screws with screw caps. Click the screw caps into place on the self-tapping screws.

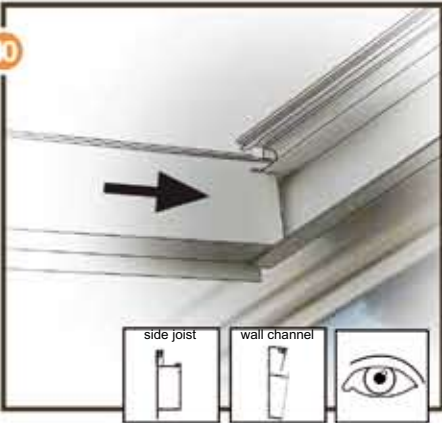
Assembly
Installing the gutter



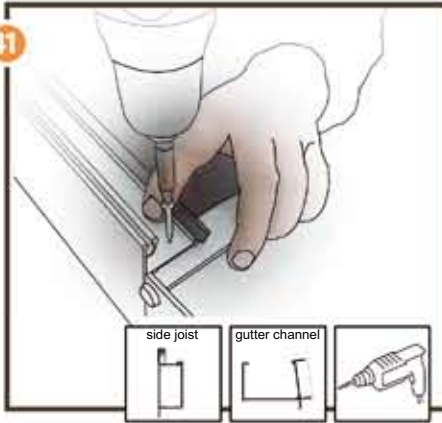
Place the gutter on the poles. Check whether the gutter is level. Screw the gutter to the poles using 2 self-tapping screws with screw caps. Click the screw caps into place on the self-tapping screws.



Installing the side joists



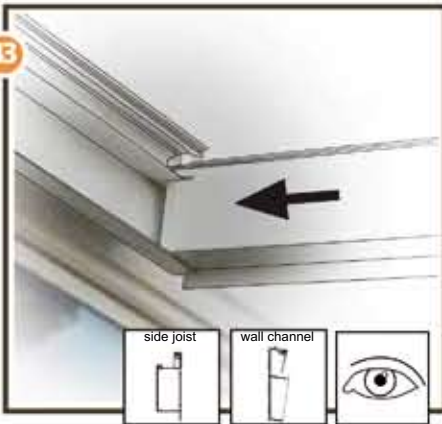
(Left side) Slide the side joist into the wall channel. Slide the mitred end of the alu pole into the gutter channel.



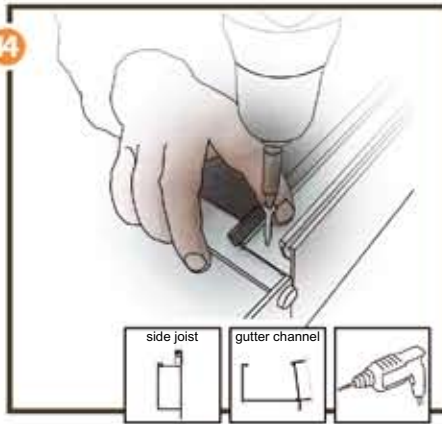
Screw the side joist to the gutter channel with a self-tapping screw.



Screw the side joist to the wall channel with a self-tapping screw.



(Right side) Slide the side joist into the wall channel. Slide the mitred end of the alu pole into the gutter channel.

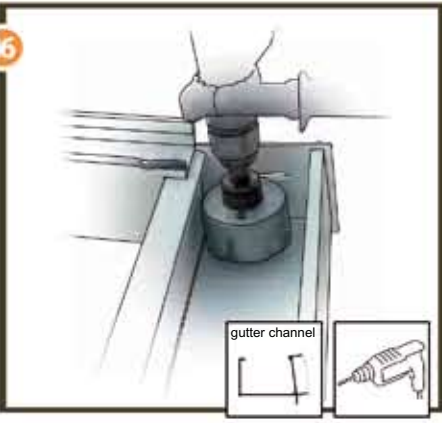


Screw the side joist to the gutter channel with a self-tapping screw.

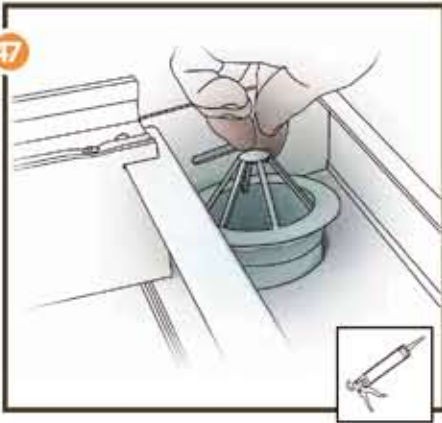


Screw the side joist to the wall channel with a self-tapping screw.

Installing a leaf guard



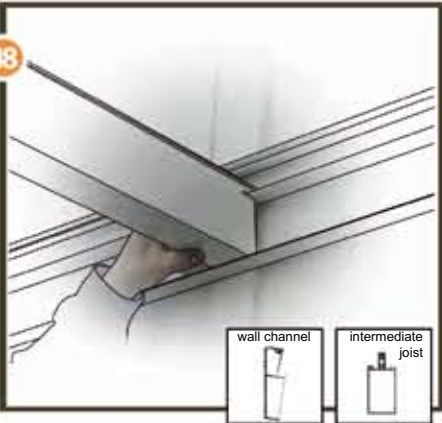
Determine where the water discharge of the gutter should be (directly above the alu pole). Drill the opening for the water discharge with the 80 mm hole saw.



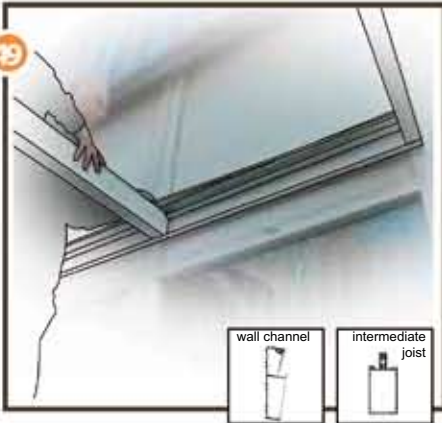
Place the leaf guard in the opening for the water discharge. Make sure the leaf guard is placed inside the PVC pipe. Seal the leaf guard with silicon caulk. Make sure the silicon caulk is smooth and watertight.



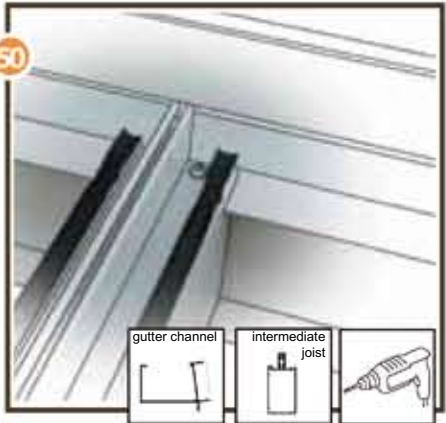
Installing the intermediate joists



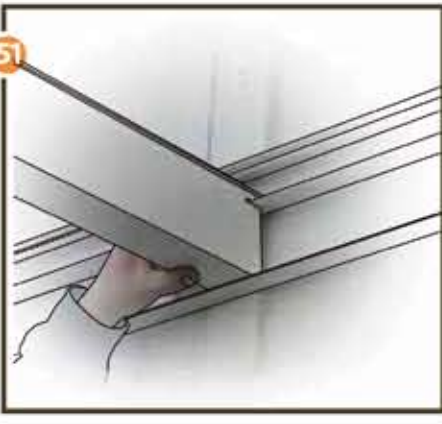
Slide the intermediate joist to the marked position in the wall channel. Slide the intermediate joist to the marked position in the gutter channel.
Attention: Allow 20 mm of play for plate expansion. Place at 1000 mm intervals for 980 mm plate width.



Measure the distance from the side joist to the intermediate joist at the wall end. Slide the intermediate joist to the correct distance. Measure the distance from the side joist to the intermediate joist at the gutter end. Slide the intermediate joist to the correct distance.
Attention: See figure 48.



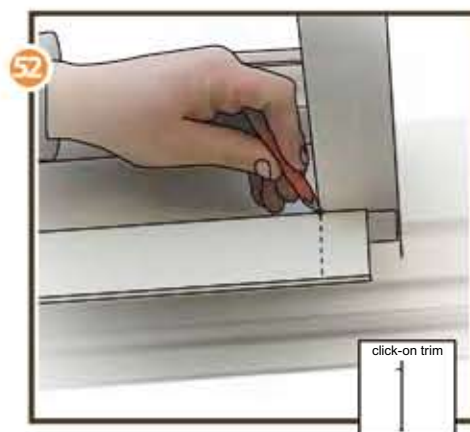
Fasten the intermediate joist to the gutter channel with a self-tapping screw. Screw the intermediate joist to the wall channel with a self-tapping screw.



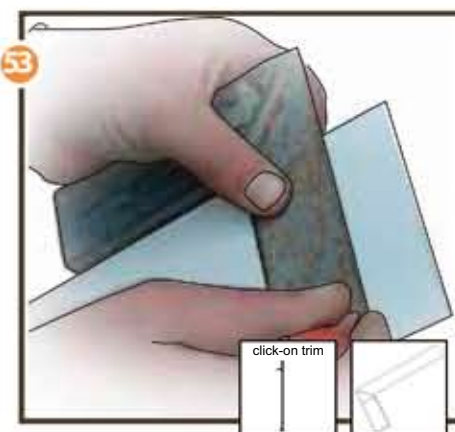
Repeat the steps until all the intermediate joists have been installed.



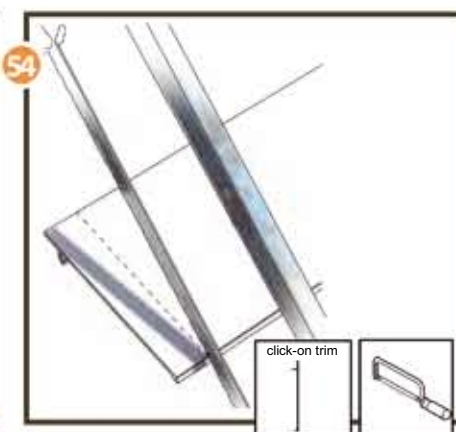
Optional click-on trims for wall channel and gutter channel



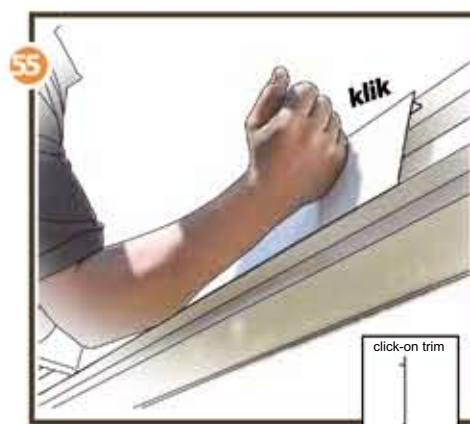
Mark the distance from the side joist to the intermediate joist on the click-on trim.



Draw a square line on the click-on trim at the mark.



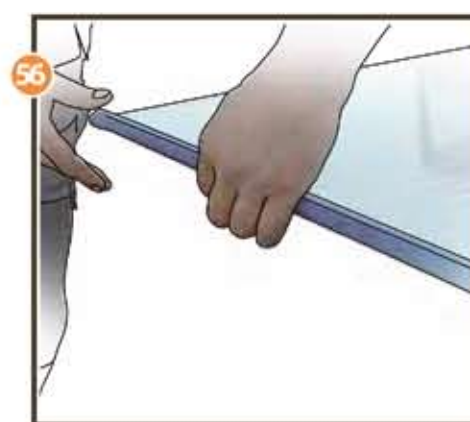
Saw off the click-on trim along the line.



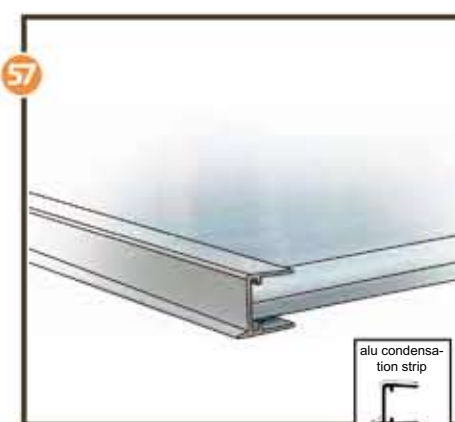
Snap the click-on trim into the wall channel. Repeat the steps until the wall channel is covered with click-on trim. (Option: Repeat for gutter profile.)



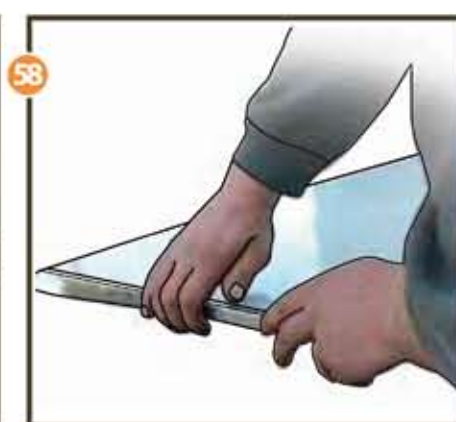
Installing the plates



Cover the gutter side of the plates with anti-dust tape. The anti-dust tape prevents the inside of the plates from becoming dirty whilst allowing water vapour to escape from inside the plates.



Slide an alu condensation strip on the gutter side of the plates.

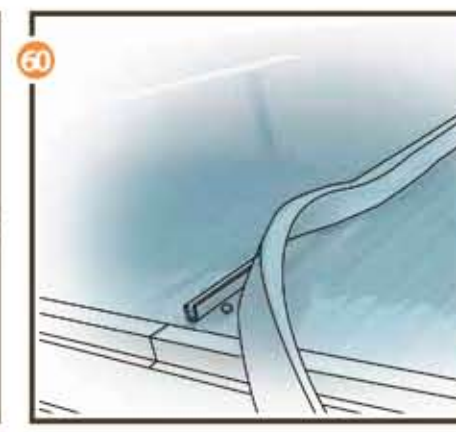


Cover the wall side of the plates with the aluminium tape.

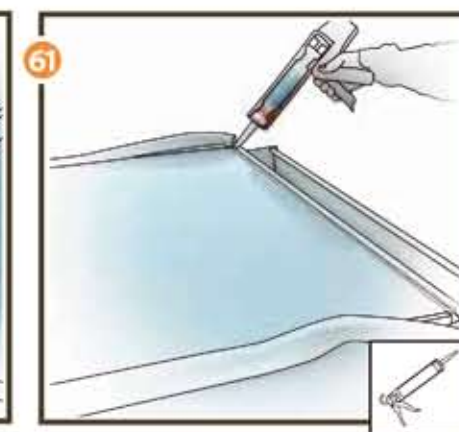
Attention: Always place the plates with the UV side face up. This is always printed on the protective film covering the plate.



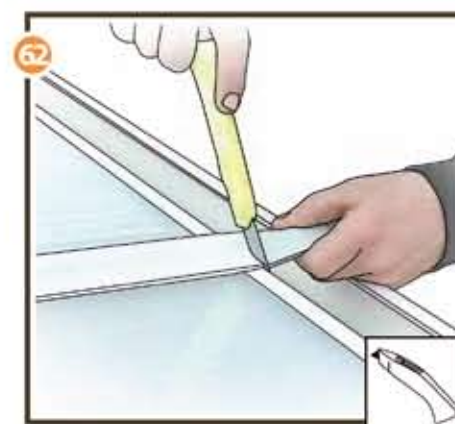
Place the plates on the side joists and intermediate joists. Make sure the alu condensation strip is at the gutter end, with the lip on the underside. The plates must have at least 20 mm of play per metre, because they expand when heated by the sun.



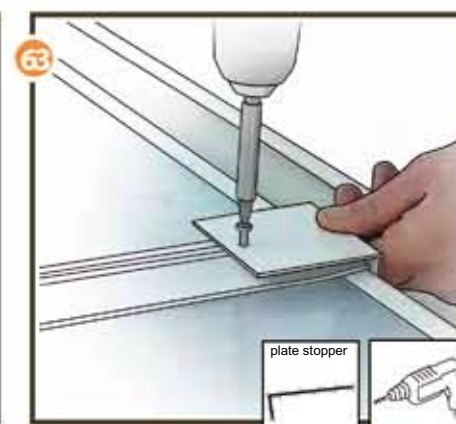
Press the rubber roof strip into the intermediate joists. Don't insert the last bit at the gutter end yet.



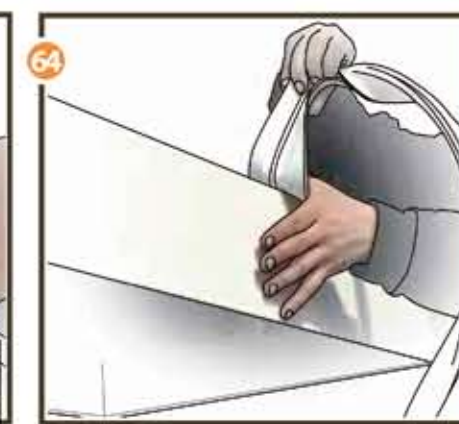
Seal the alu condensation strip at the gutter end to top of the plate with silicon caulk.



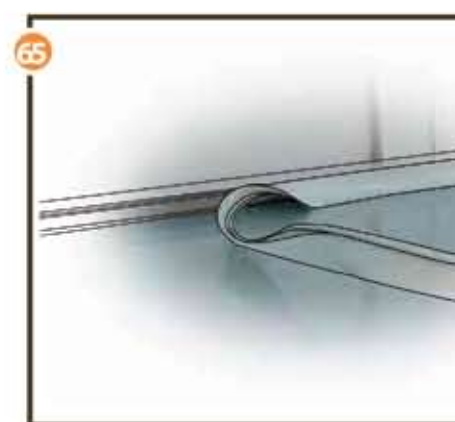
Press the rubber roof strip completely into the intermediate joists. Cut off the rubber roof strip at the correct length.



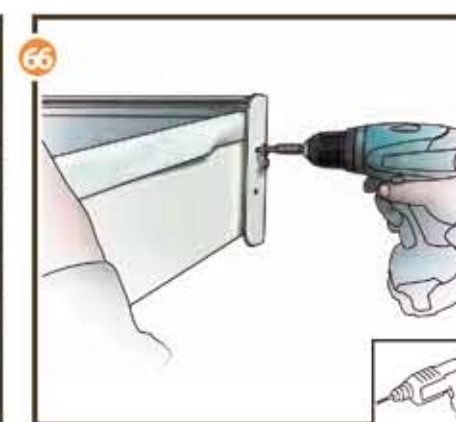
Screw a plate stopper to the intermediate joist at the gutter end. The plate stopper ensures that the plate cannot slide downwards.



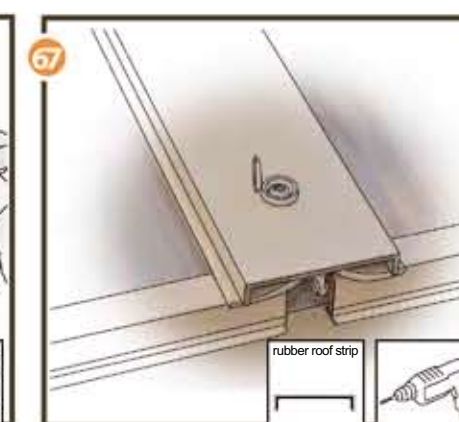
Press the rubber roof strip into the side joist. Cut off the rubber roof strip at the correct length.



Press the rubber wall strip into the wall channel. Cut off the rubber wall strip at the correct length.



Screw the end plates to the wall channel using two self-tapping screws with screw caps. Click the screw caps into place on the self-tapping screws.



Screw the aluminium cover strips over the rubber roof strips. Fasten every 75 cm using self-tapping screws with screw caps. Click the screw caps into place on the self-tapping screws.

Optional

Accessories

Wonderful accessories for your veranda or sun lounge

Veranda heater Available in various wattages	Cleaning set With telescopic handle
Decorative trims Decorative trims for on the gutter Choose from: Rounded, Classic or Flat	Radio with speakers With 20 FM presets
Halogen lighting Including dimmable electrical transformer. 240 VAC	Aluminium cover strips To protect rubber roof strips
Trapezoidal gable ends Choose from: Trapezoid gable ends with panel, glass, plate or framed plates	

NOTE:

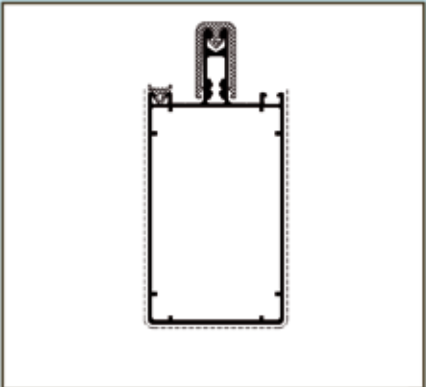
If your veranda is installed in the open field, or equipped with closed sides, we recommend you the following options,

- Use the optional rubber covers.
- Use the optional prefab concrete foundation.



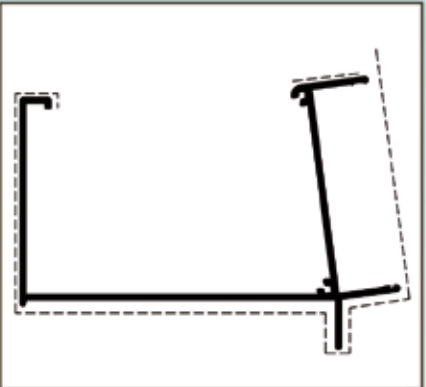
Side joist

VZL 7605



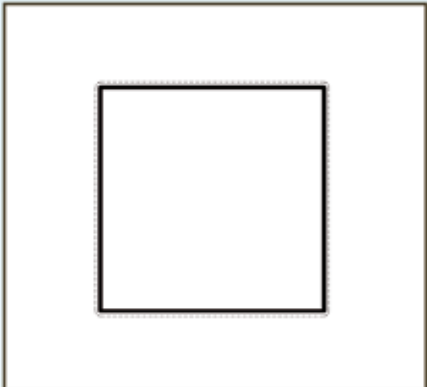
Intermediate joist

VTL 7604



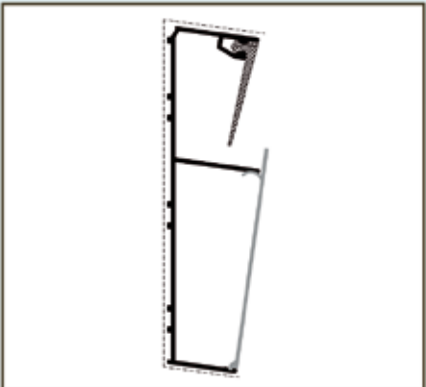
Gutter channel

VGT 006



Alu pole

VPL 0081



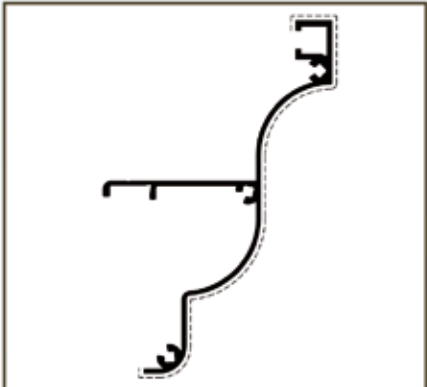
Wall channel

VMP 0008



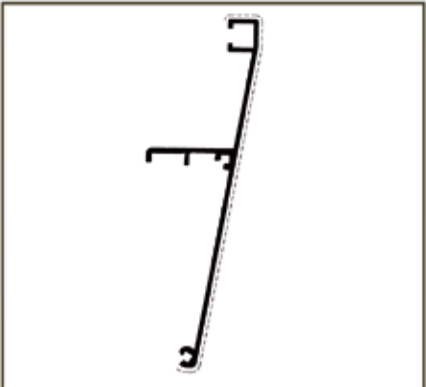
Click-on trim

VKL 0007



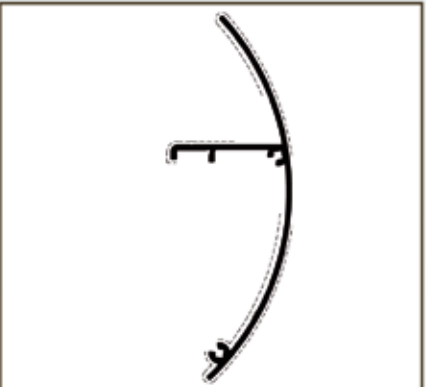
Classic gutter cap

VGK 0003



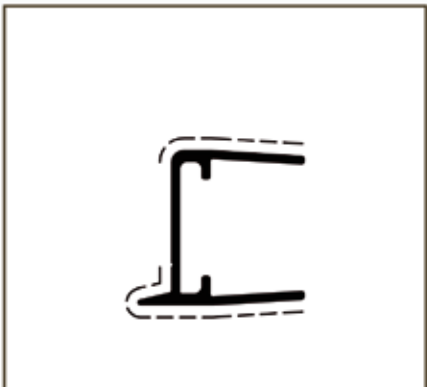
Flat gutter cap

VGW 0004



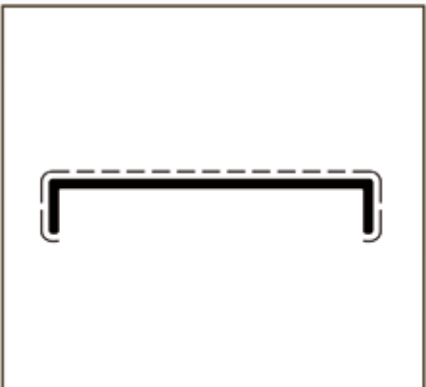
Rounded gutter cap

VGR 0005



Alu condensation strip

VUP 0013



Aluminium cover strip

VRA 6010

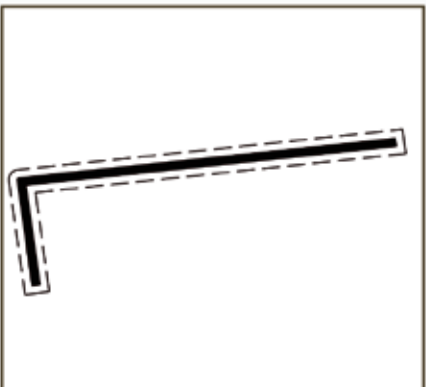


Plate stopper

VPS 7020